



**COMPONENT  
HARDWARE®**

1890 Swarthmore Avenue, PO Box 2020, Lakewood, NJ 08701  
Phone: 800-526-3694, 732-363-4700, Fax: 732-364-8110  
www.componenthardware.com

**PROJECT NAME:** \_\_\_\_\_

**LOCATION:** \_\_\_\_\_

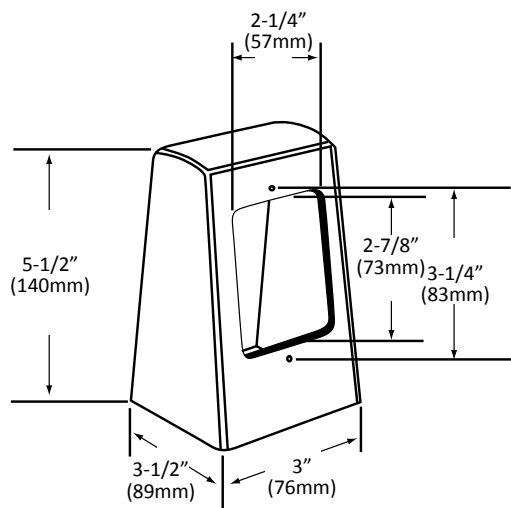
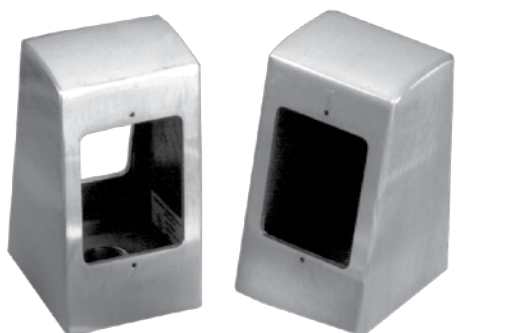
**SPECIFIER ITEM NO.** \_\_\_\_\_ **QTY:** \_\_\_\_\_

**COMPONENT HARDWARE PART NO.** \_\_\_\_\_

## Component Hardware® Cast Aluminum Electric Outlet Boxes

### R58-10x0 Series

R58-1010 Single Faced  
R58-1020 Double Faced



*Dimensions shown in inches (mm) are for reference only  
and are subject to change.*

Shipping weight - 1 lb

Cast aluminum electric outlet boxes

#### Medium Duty Construction

- Brushed satin finish
- For 3/4" NPS or 1-1/2" NPS (adapter provided)
- Ground screw provided

#### Specifications

Electric outlet boxes to be Component Hardware R58-10x0 Series in the following configuration:

\_\_\_\_ R58-1010 Single Faced

\_\_\_\_ R58-1020 Double Faced

Electric outlet box to be UL listed and constructed of cast aluminum with brushed finish and includes base plate, conduit adapter and ground screw.



**LISTED**  
File# E96517